



# Appalachian Voices

**Annual Report**



## Note from the Executive Director

From mountaintop removal coal mining and coal-burning power plants to dangerous and leaky coal ash ponds, coal has an immense impact on our land, air and water. The life cycle of this fossil fuel has already inflicted irreparable damage to our region. By focusing on the impacts of coal to our forests, rivers and air, we can make a positive difference in the health of Appalachia.

In 1961, President John F. Kennedy declared a national goal to put a man on the moon by decade's end. By 1969, we achieved that goal, but not without a massive dedication of time, resources and national focus. We need to prioritize solving our energy future with that same spirit.

Coal played an important role in our nation's growth—but it's a poor choice for our future. Despite what the industry might say, coal is dirty and expensive; the cost is hidden in fouled waterways, polluted air and health problems in our people and forests. Energy efficiency can dramatically lighten our energy load, and investing in cleaner solutions can replace the demand for coal. While we cannot transform our entire energy infrastructure overnight, we must begin now to create a cleaner energy future for Appalachia.

Thanks for joining us in this work.

*Willa*

Willa Mays



## Note from the Board Chair

The Appalachian region is unique. It is one of the most bio-diverse regions outside of the tropical rainforests; the mountain peaks, clear streams and abundance of flora and fauna hum with life. The friendliness of the people I encounter heightens the Appalachian experience—it is a paradise worthy of protection.

Appalachian Voices works diligently to safeguard the land, air, water and people of Appalachia, and strives to create long-lasting, positive changes for our region. This is the most dedicated and passionate group of individuals I have ever had the opportunity to work with.

Our members have been crucial in helping Appalachian Voices protect the natural heritage of Appalachia. The launch of Appalachian Water Watch this year will strengthen our mission to protect the ecological values of this region while we battle its number one polluter—coal. We've never been closer to ending mountaintop removal, thanks to a national movement you have

helped create—but we are fighting a behemoth industry with deep pockets. With your support, I'm confident we can win!

With deep appreciation,

*Christina*

Christina Howe



## STAFF

Willa Mays	Executive Director
Matt Wasson	Programs Director
Lenny Kohm	Campaign Director
Sandra Diaz	Development & Communications Director
Susan Congelosi	Operations Manager
Shay Boyd	Administrative Associate
Parker Stevens	Development Associate
Donna Lisenby	Upper Watauga Riverkeeper
Eric Chance	Americorps Riverkeeper Associate
Jamie Goodman	Communications Coordinator/Appalachian Voice Editor
Jillian Randel	Americorps Communication Outreach Associate/Appalachian Voice Assoc. Editor
Benji Burrell	Technologist
Jeff Deal	IT Specialist

### WASHINGTON, D.C. OFFICE

J.W. Randolph	Legislative Associate
Kate Rooth	National Field Coordinator
Austin Hall	Field Organizer

### CHARLOTTESVILLE, VA OFFICE

Tom Cormons	Virginia Director
Mike McCoy	Virginia Field Organizer

## BOARD OF DIRECTORS

### OFFICERS

Christina Howe	Chair
Heidi Binko	Vice Chair
Matthew Anderson-Stembridge	Secretary
Bunk Spann	Treasurer

### MEMBERS AT LARGE

Brenda Boozer  
Dot Griffith  
Mary Anne Hitt  
Brenda Huggins  
Kathy Selvage  
Lauren Waterworth  
Pat Watkins

### ADVISORY COUNCIL

Liz Aycock	Riverkeeper Council
Jonathan C. Allen, CPA CFP, CLU	Chair's Council
Alfred Glover	Chair's Council





## Educating Through Media Outreach



### *The Appalachian Voice*

To inspire an appreciation of our region as a national treasure worthy of protection, we publish *The Appalachian Voice*, a free bimonthly news publication that has covered environmental, recreational and cultural news in Appalachia since 1996. Issue themes in 2009 included green jobs, wind energy, parks and forests, water pollution and the TVA coal ash spill.

During the year, a team of volunteers helped distribute 220,000 copies of *The Appalachian Voice* in seven states.

## Our MISSION

Appalachian Voices brings people together to protect the land, air and water of central and southern Appalachia. We empower people to defend our region's rich natural and cultural heritage by providing them with tools and strategies for successful grassroots campaigns. Since the impacts of coal threaten Appalachia more than any other single source of pollution, we are committed to reducing coal's impact on the region and advancing our vision for a cleaner energy future.

## Our VISION

We envision a day when the integrity of the land, air and water of central and southern Appalachia is protected for future generations, and the region is upheld as a national model of a vibrant, just and sustainable economy.



The Appalachian region suffers from some of the worst air pollution produced by coal-fired power plants—pollution that causes impaired visibility, acid rain, respiratory and cardiovascular diseases and other health problems. Appalachian Voices is working to stop electric utilities from continuing “business-as-usual” by advocating for investments in energy efficiency and clean, renewable energy sources rather than coal-fired power plants. In order to promote these sweeping changes, we are working in statewide coalitions in both North Carolina and Virginia.

## Wise Energy for Virginia

Appalachian Voices is a leader in the Wise Energy for Virginia Coalition, a movement of thousands of citizens from every corner of the Commonwealth who advocate for clean energy and for ending the construction of new coal-fired power plants that would burn mountaintop removal mined coal and pollute Virginia’s air.

**Stopping New Coal Plants:** Our past work fighting a proposed Dominion Virginia Power coal-fired power plant in Wise County, Virginia, elevated the issue into what one major newspaper labeled “the biggest environmental controversy in Virginia.” The unprecedented public pressure we brought to bear led to a 98% reduction in mercury emissions—the most stringent limit in the country—and seriously curtailed limits on other pollutants. Dominion was also required to convert another large coal plant to natural gas.

We are currently directing the tremendous momentum of the Wise County fight to defeating a massive 1,500-megawatt coal-fired power plant proposed by the Old Dominion Electric Cooperative (ODEC). If built, the plant would



The Wise Energy for Virginia coalition includes Appalachian Voices, the Chesapeake Climate Action Network, the Sierra Club’s Virginia Chapter, the Southern Environmental Law Center and the Southern Appalachian Mountain Stewards.

be the single largest coal-fired facility in Virginia and would burn coal from mountaintop removal mines. We are working with citizens throughout the state, with an emphasis on downwind communities that would be impacted by the plant’s air pollution. While ODEC recently withdrew its air pollution permit applications, it remains committed to building this massive plant and is pursuing required wetlands permits. We will work steadfastly to ensure that ground is never broken on this project.

**Promoting Efficiency and Renewables:** Thanks to major grassroots pressure, we secured the passage of landmark legislation in Virginia that increases incentives for electric utilities to invest in efficiency programs. This legislation has led to the state’s first significant utility efficiency investments, which will reduce pollution and the demand for mountaintop removal coal while saving consumers money and creating jobs.

## RePowering North Carolina

We are currently working to build a coalition of environmental groups in North Carolina committed to transitioning the state away from the use of coal for electricity and promoting renewable energy and energy efficiency. We have developed a “NC Power Pledge” designed to build and excite a new base of clean energy supporters across the state. Individuals, organizations, businesses and local governments will be asked to sign the pledge with a goal of leveraging regulatory and legislative changes to make a cleaner energy future a reality.



Photo by Jamie Goodman

Working in coalition with statewide groups, Appalachian Voices helped mobilize a campaign against the Cliffside Power Plant in southwestern North Carolina, culminating in a march over three hundred people strong in Charlotte, N.C., in June 2009. Because of our efforts, the plant’s proposed capacity was eventually cut in half—from 1600MW to 800MW.





Coal industry practices and other pollution sources pose serious threats to the health of Appalachian waterways. To date, nearly 2,000 miles of freshwater streams in Appalachia have been buried and destroyed by mountaintop removal coal mining. Massive impoundments containing billions of gallons of coal slurry—a by-product of coal processing—pollute groundwater with dangerous carcinogens. Highly toxic coal ash waste from coal-fired power plants contaminates rivers, lakes and ground water when proper precautions are not taken.

While much of our water work focuses on region-wide impacts, we also work to protect our local waterways with a special focus on the upper Watauga River in western North Carolina.

### Coal Ash

When a billion gallons of toxic coal ash from a Tennessee Valley Authority (TVA) power plant in Harriman, Tennessee, spilled into the Clinch and Emory rivers, Appalachian Voices was one of the first organizations on the scene to collect water samples. Our findings—published in *The New York Times*—showed levels of arsenic, lead, chromium and other metals that exceeded amounts reported by TVA and federal and state agencies.

Since the TVA coal ash disaster, our Waterkeeper team has continued to work for stronger coal ash regulations on both the state and federal levels. We produce technical reports in tandem with other organizations detailing the dangerous effects of coal ash on water quality. Due to our findings on the impacts of coal ash in North Carolina, that state now requires both major energy utilities—Duke and Progress—to perform additional testing near coal ash ponds. On the federal level, we are encouraging the EPA to adopt a proposed rule to treat coal ash as a hazardous waste.



Photo by Dot Griffith, courtesy of Southwings

### Appalachia Water Watch

Systemic failures in enforcement, regulation and monitoring by state and federal agencies in the Appalachian region demand a watchdog. To meet this need, Appalachian Voices is launching a new initiative that will empirically expose the environmental and human health impacts of coal mining and processing on our waterways. Appalachia Water Watch will engage citizen-scientists to monitor water pollution in their local watersheds and identify patterns of pollution. The program seeks to create an atmosphere of accountability within federal and state agencies charged with enforcing clean water laws.

### Waterkeeper Program

The Upper Watauga Riverkeeper program serves as the primary advocate and ambassador for the upper Elk and Watauga rivers, which run from their headwaters on Grandfather Mountain in western North Carolina to Watauga Lake in eastern Tennessee. The program's mission is to protect and restore the water quality and ecological health of the communities served by this watershed through monitoring and rules enforcement.

In October 2009, the Riverkeeper partnered with local law enforcement to organize Operation Medicine Cabinet, a drug take-back event designed to keep pharmaceuticals out of our rivers and away from our children. In the first year we collected over 538,000 pills, almost 60 gallons of liquid medicines and 2,000 syringes. North Carolina law enforcement officials recently adopted Operation Medicine Cabinet as a statewide initiative, with the first event scheduled for spring 2011.



Photo by Donna Liseby

The Upper Watauga Riverkeeper helped respond to a fish kill that damaged more than a mile of a creek in Boone, N.C., eventually tracking the source of the kill to an improper application of asphalt sealant. Our Riverkeeper is working with town officials and citizens to outlaw the use of this toxic substance.



The Appalachians are among the oldest mountains on Earth. The hills, hollows and headwaters are home to a rich abundance of life. The entire cycle of coal—from extraction to processing, burning and waste disposal—poses the most serious threat to this unique, iconic region.

## Ending Mountaintop Removal Coal Mining

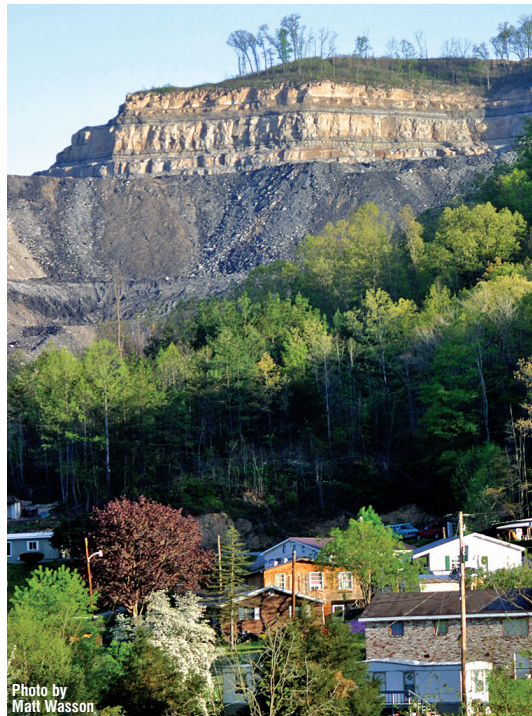
To date, over 500 mountains have been destroyed, and nearly 2,000 miles of pristine headwater streams buried by mountaintop removal coal mining. When we began our campaign in 2002, most Americans were unaware that the coal industry was destroying America’s oldest mountains for coal. Now, after years of work, the issue is high on the national environmental agenda and ending mountaintop removal is viewed as a dramatic first step in transitioning to a cleaner energy future.

**They’re Blowing Up Our Mountains and There Oughta Be A Law!** While pressuring the Environmental Protection Agency to take action has gone a long way toward mitigating the devastating impacts, mountaintop removal coal mining is still legal. Only an act of Congress can permanently stop this tragic process.

With two bills in Congress—the Appalachia Restoration Act in the U.S. Senate and the Clean Water Protection Act in the House of Representatives—we have an unprecedented opportunity to pass a law.

**Engaging Citizens on the State Level:** In 2009, we helped craft legislation in North and South Carolina, Georgia, Maryland and Missouri that would make the burning of mountaintop removal coal within these states illegal. With allies in Virginia, we supported legislation to outlaw the dumping of mountaintop removal mining waste into streams.

**Reaching Out From Coast-to-Coast:** Through our Appalachian Treasures tour, residents personally affected by mountaintop removal share their stories about contaminated water, extreme flooding and compromised health with thousands of Americans in service clubs, churches and organizations across the country. In 2010, the tour reached an even broader audience thanks to coverage from radio and TV outlets in the Northeast and Midwest.



**Impacting Decision-makers:** Each year we bring citizens from across the nation to Washington, D.C.—including residents directly impacted by mountaintop removal—to educate our leaders about this detrimental practice. In 2009, our 4th Annual Week in Washington brought more than 150 participants from 24 states to ask the Obama Administration and Congress to end mountaintop removal mining.

**Growing A National Audience With iLoveMountains.org:** Over 43,000 people have signed the pledge to end mountaintop removal through our online action and resource center, and thousands more have seen their connection to mountaintop removal through our *My Connection* tool. Our *America’s Most Endangered Mountains* video series—highlighting communities threatened by mountaintop removal—has had more than 677,000 views to date, and our Bloggers Challenge supplies nearly 2,900 online writers with information about the issue, creating a wave of online coverage.

**Diminishing Big Coal’s Credibility:** In contrast to the coal industry’s multi-billion-dollar misinformation campaign, the 2009 beta version of our website, OpenSourceCoal.org, provides reliable information regarding the production, consumption, transportation and cost of coal. We will continue to expand this valuable tool in an effort to set the record straight on coal.

## Promoting Sustainable Forestry

Southern Appalachian forests are vital to a healthy ecosystem, with each acre of healthy forest sequestering over 31 tons of carbon each year. Appalachian Voices distributes our free *Managing Your Woodlands* handbook and DVD manual for landowners, providing information on sustainable stewardship including forest health, economic considerations and financial incentive programs for good management. To date, 6,500 concerned citizens—owning an estimated half million acres—have received this informative guide.



## National Recognition

Our website, iLoveMountains.org, was featured at the **2009 UN Climate Change Conference** in Copenhagen.

Appalachian Voices was named a “**Google Earth Hero**” for our innovative use of technology to change the world.

Good Magazine named iLoveMountains.org as one of the first ever “**Good 100**” people, ideas and organizations changing the world for good.



Our science-based approaches have received national attention and generated extensive media coverage in outlets such as **The New York Times**, **Boston Globe**, **Smithsonian Magazine**, NPR, BBC World News, CNBC, MSNBC and more.

Appalachian Voices was honored with The *Business Ethics Network’s* **Benny Award** as a supporting organization in our partnership with Rainforest Action Network to “transform corporations into socially and environmentally responsible organizations.”



# FINANCIAL ACCOUNTABILITY

## 2009/2010 Foundation Giving

Blue Moon Fund	Natural Resources Defense Council
Blumenthal Foundation	Neuse River Foundation
Cornell Douglas Foundation	Norcross Wildlife Foundation
Elmo Foundation	Oak Hill Fund
Flora Family Foundation	Panta Rhea Foundation
Foundation for Deep Ecology	Patagonia
Goldberg Berbeco Foundation, Inc	Richard and Rhoda Goldman Fund
Growald Family Fund	Rockefeller Family Fund
Helen M. Clabough Charitable Foundation	The Conservation Alliance
Jan and David Blittersdorf Foundation	The Morningstar Foundation
Janelia Foundation	The Overbrook Foundation
JMM Charitable Lead Trust	The Park Foundation
Keith Campbell Foundation	Tides Foundation
Mental Insight Foundation	Trubador Foundation
Mertz Gilmore Foundation	Wallace Genetic Foundation
Miller Wehrle Family Foundation	WestWind Foundation
Moore Charitable Foundation	Z Smith Reynolds Foundation

Between Jan. 2009–Sept. 2010

## Statement of Financial Position

	2009	2008
<b>Assets</b>		
<b>Current Assets:</b>		
Cash and cash equivalents	\$356,452	\$637,278
Accounts receivable	11,543	5,439
Other current assets	2,000	491
Deposits	4,020	2,184
Contributions receivable	<u>85,000</u>	<u>85,000</u>
Total Current Assets	<u>459,015</u>	<u>730,392</u>
<b>Property and Equipment:</b>		
Improvements	8,421	--
Equipment	48,770	46,744
Furniture and fixtures	762	762
Less: accumulated depreciation	(24,582)	(26,180)
Net property and equipment	<u>33,371</u>	<u>21,326</u>
<b>Total Assets</b>	<b><u>\$492,386</u></b>	<b><u>\$751,718</u></b>

## Liabilities & Net Assets

### LIABILITIES

#### Current Liabilities:

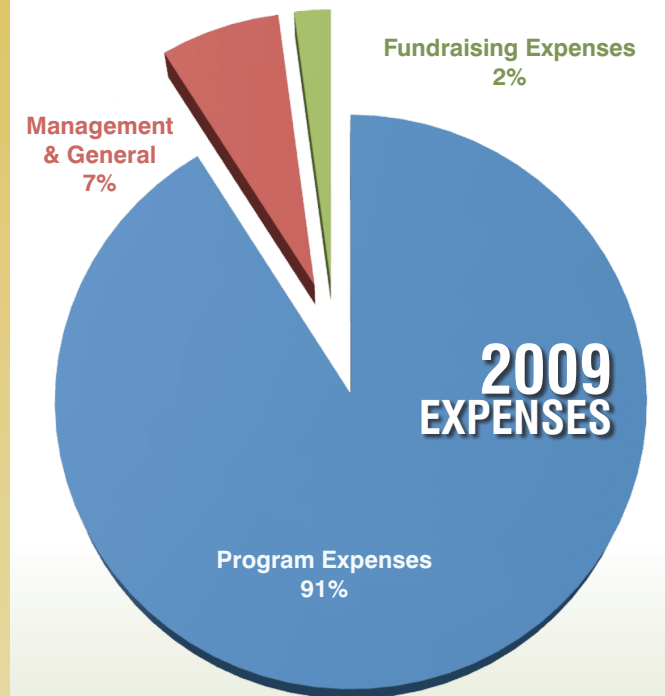
Accounts payable	\$11,772	\$6,934
Accrued expenses	<u>6,423</u>	<u>3,556</u>
Total Current Liabilities	<u>18,195</u>	<u>10,490</u>

#### NET ASSETS:

##### Unrestricted:

Operating	238,007	438,960
Invested in property & equipment	<u>33,371</u>	<u>21,326</u>
Total Unrestricted	<u>271,378</u>	<u>460,286</u>
Temporarily restricted	<u>202,813</u>	<u>280,942</u>
Total Net Assets	<u>474,191</u>	<u>741,228</u>

<b>Total Liabilities and Net Assets</b>	<b><u>\$492,386</u></b>	<b><u>\$751,718</u></b>
---	-------------------------	-------------------------



## Statement of Financial Activities

	2009	2008
<b>Support &amp; Revenues:</b>		
Contributions	\$1,090,554	\$1,333,213
Investment income	9,251	18,027
Voice advertisements	19,317	25,216
Other income	<u>3,416</u>	<u>3,189</u>
<b>Total Support &amp; Revenue</b>	<b><u>1,122,538</u></b>	<b><u>1,379,645</u></b>
<b>Expenses</b>		
Program expenses	1,266,324	1,133,608
Management and general	94,511	146,940
Fundraising expenses	<u>28,740</u>	<u>28,511</u>
<b>Total Expenses</b>	<b><u>1,389,575</u></b>	<b><u>1,309,059</u></b>
<b>Change in Net Assets</b>	<b>(267,037)</b>	<b>70,586</b>
<b>Net Assets</b>		
Beginning of year	741,228	670,642
End of year	<u>\$474,191</u>	<u>\$741,228</u>



# SUPPORTERS

Appalachian Voices' members, supporters and Business League share our vision for a healthy, thriving region. They are committed to protecting our land, air, water and communities by providing a reliable source of income, spreading our message and advocating for the mountains. We are deeply grateful for their continued support and would like to thank our 2009/ 2010\* members:



## Champions of the Mountains

### Over \$25,000

Adam Lewis  
Fred and Alice Stanback

### \$5,000 to \$25,000

Acciona Wind Energy USA LLC  
Phillip Blumenthal  
CLOLA  
Brad and Shelli Stanback  
James and Marianne Welch

### \$2,500 to \$4,999

Christina Howe  
Sierra Club  
Sierra Club-Tennessee Chapter  
Jeffrey and Constance Woodman

### \$1,000 to \$2,499

American Wind Energy Association  
Jill and Amanda Baker  
Don and Joan Brannon  
Nelson Brooke  
Mac and Eileen Brown  
Coran Capshaw  
Mark and Doniphan Howland  
Little Acorn Fund-W  
Katherine Mooney and David Pryor  
Removador Tours, LLC  
Sisters of the Precious  
Blood Generalate  
Bunk and Nancy Spann

## Appalachian Stewards

### \$500 to \$999

Anonymous Donor (1)  
Appalachian Institute of  
Renewable Energy (AIRE)

Candace Bouchard  
Mary Ellen Copeland and  
Edward Anthes  
Excel Electric  
Brenda Huggins  
IntelMap, Inc.  
Caleb Jaffe  
Ann Jones-Weinstock  
Phillip Krohn and Monica Bond  
Lisa Kyle  
Arlean Lambert  
Lenior-Rhyne University  
Lauren McGrath  
Kincaid and Allison Mills  
Operation Pocket Change  
Sam Silvey  
Richard and Debbie Stevens  
Laurel Toussaint  
Unitarian Universalist  
Congregation of Frederick

## Appalachian Protectors

### \$250 to \$499

Lise Ackerman  
Liz Aycock  
Ramesh Bhatt  
Leslie Boyd  
Stanley and Colette Corwin  
Stanley Domanowski  
Melissa Duffy  
Nathan Dutschke  
Caitlin Geary  
Marc Harkness  
Dorrit Herreid  
Mary Anne and Than Hitt  
Grace Holden  
Wendy and Steven Johnston

Larry and Jennifer Keel  
Eileen Laird  
Lees-McCrae College  
Martha Logan  
Clarence and Judy Manning  
Ged Moody  
Marilyn Mullens and Russell Martin  
Andrea Parham  
Marie Peine  
Mike and Sharon Quisenberry  
Susan Ross  
Laurie Skokan  
Montie Tesky  
Richard Vaughn  
Susan Williams  
Eli Zigas

## Mountain Defenders

### \$100 to \$249

Susan Adams  
Deborah Alexander  
Nancy Ashline  
Andy and Mara Austin  
Avery County Council on Aging  
Sonny and Barbara Aycock  
Malcolm and Pamela Baldwin  
Sarah and Elizabeth Baldwin  
Virginia Barber  
Pat Beaver  
Bob and Carol Black  
John Bolton  
Shay Boyd  
David Brewer  
Mike and Loretta Brindock  
Peter Brisbane  
Diane Brooks  
Bradley Brown  
Patricia Brumbaugh  
Emily Buehler  
Susan and John Burnett

Michael  
Carlebach  
Andrew Carroll  
John Cassidy  
Catawba Valley Outing Club  
James and Maggie Christenbury  
Patrick Chu  
Barbara Clark  
Barbara and Rick Clevenger  
Kristan Cockerill  
Ken Cordell and Barbara McDonald  
Grace and Matthew Cormons  
Robbie Cox  
Crossnore Presbyterian Church  
Carey Scott Davis  
John Deacon  
Britta Dedrick  
Jim Deming  
Martha Dickinson  
Erica DiPietro  
Ian Dix  
Lowell Dodge  
Robb Doser  
Louise Dunlap  
Nicole Emmons  
Aline Euler  
Andy Feimster  
Judith Feinberg  
Deborah and Karl Fields  
Kelly Finley  
Penny and Scott Fletcher  
Elizabeth and Joesph Fluaharty  
Linda Folda  
Mary Emma Foster  
Charlie and Patricia Fox  
Elizabeth Fyfe  
Christy and Joey Gabbard  
Garden Club of Virginia  
Gerraldine and Brian Garrett  
Bill and Kathy Geary  
Sue Gier

Mountain Protectors pledge a monthly amount to provide a dependable source of revenue for us to work toward protecting the air, land, water and people of Appalachia.

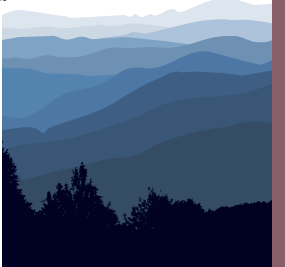
Ken Abbott  
Nina Ackley  
Kelsey Adams  
Matthew Anderson-  
Stembridge  
Mary Bacon  
Linda Bailey  
Kate Belski  
Grace Cangialosi  
Stephanie Carmody  
Glenn Carper  
Patricia Ciaffone  
Darrell and Kirsten Collins  
Shelly Connor  
Jeffrey Deal  
David Dean and Mike Norris

Sandra Diaz  
Bill Dozier  
William Edwards  
Dianne Engleke  
David Esopi  
Richard and Joanna  
Fireman  
Jonathon Gensler  
Scott Gollwitzer and  
Tracy Davids  
Jamie Goodman  
Tom Hagood  
Margaret Halbeisen  
Alan Harms  
Donna Hartman  
Linda Hayes

Gabrielle Isenbrand  
Stuart Jones  
Carol Keating  
Nancy Kleszy  
Lenny Kohm  
Ernest Lehmann  
Reneé Lyons  
Jane Mangini  
Jim Matthews  
Willa Mays  
Sallie McCauley  
Lou McMillion  
Nancy Michaelson  
Sarah Miller  
Thomas Moore  
Tupper Morehead

Joyce Newman  
Jeff Pair  
Martha Paradeis  
Shella Paskel  
Judith Phoenix  
Stephanie Pistello  
Jim and Cynthia Ponder  
Erin Reilley  
Allie Sasser  
Jackie Saye  
Kathryn Schaffer  
Gregory and Nancy  
Smith-Hunnicut  
Dawn Swanson  
Lynn Thomas  
Virginia Underwood

## MOUNTAIN PROTECTORS



Ruth Vandersall  
Ellen Westbrook  
Diana Withen  
Michael and Joan Wood  
Jane and John Young  
Nicholas Young

Charles and Cynthia  
Gollwitzer  
Camilla Gorham  
Bingham Graves  
Richard and Mary Gray  
Dot Griffith  
Joyce Griffith  
Harry Hadden  
Betsy Hardin  
William B. Hawkins  
High Country Outdoor  
Film Festival  
Stephen Hinerman  
Linda Hunt  
Jodie Imbriglio  
Lyn Ingham  
Ellen Johnson  
Joy Johnson  
Thomas Jones and  
Diana Foster-Jones  
Bob Kaplan

Sarah Kavage  
Deborah Kibbel  
Philip Klein  
Douglas Laptook  
Lynne Lear  
Russ Leinbach  
Don Lenox  
Charles and Nancy  
Lester  
Sarah Linn  
Donna Lisenby and  
Nita O'Brien  
Orie and Elinor Loucks  
Rebecca Love  
Kevin Low  
Mary Lucey  
Athey Lutz  
Ferris Lyle  
Kathryn Lynch  
Nancy Madden  
Jonathan Mahler

Fred and Lisa Martin  
Ken and Tracey  
Maxwell  
Clara McClure  
Ralph and Emily  
McCoy  
Merelyn McKnight  
Sarah and Larry Merck  
Rex Miller  
Jennifer and Jay Mills  
Douglas Mitchell  
Lee and Vicki Morgan  
Albert Muller  
Stephen O'Neil and  
Angela Miller  
Partnership for a Better  
Seven Devils  
Aaron Prillaman  
Joyce Rau  
David Reese  
Douglas and Pegeen

Reichert Powell  
Justus and Phyllis Reid  
Minda Reidy  
Edwin Rosenberg  
Ivan Samuels  
Rebecca Saunders and  
William Kennedy  
Bob Schlagal  
Alyse Schrecongost  
Diane and Peter  
Schweitzer  
Robert and Barbara  
Seiler  
Deborah Self and  
Amanda Wallace  
Kathy Selvage  
Phyllis Shehab  
Craig and Barbara  
Siegel  
Crystal and Todd  
Simmons

Patricia Simpson  
Sherwood Smith  
Brian Sohn  
Sebastian and  
Nancy Sommer  
Ronald and Mary  
Stanley  
Rachel Sussman  
Sylvia and Larry  
Margolies  
Philanthropic Fund  
of the Jewish  
Community  
Federation  
Terry Taylor  
Marie Terlizzi and  
Robert Dobbs  
The Gamekeeper  
Restaurant  
Ann Thomas  
Town of Blowing Rock

Town of Seven Devils  
Thomas Verville  
Brenda and James  
Waldron  
Steve Wanstrath  
Robert Waters  
Weldon Weaver  
Jim Webb  
Jane Wentworth  
William Whipple  
Dean Whitworth  
George and Betsy  
Wilcox  
Emily Willey  
Williamsburg Climate  
Action Network  
Aurelia Wills  
Roger Winsor  
Vickie Wolfe

*\*Donations made between Jan. 2009-Sept. 2010*

continued on page 16



# SUPPORTERS

## Friends of the Mountains

### Up to \$99

Dick and Gail Adams  
Robert and Judith Adams  
Donna Jean Agnew  
Anthony Alberts  
Anthy Alexiades  
George and Carrol Allen  
Jane Allen  
Martin Alpert  
Mike Anderson  
Steven and Anne Anderson  
Jack Apple and Michelle Handler  
Bob Armoch  
Peggy Arthur  
Joann Aurand  
Jackie Austin  
John Avery  
Scott Aycock  
Geraldine Azzata and Margaret Hall  
Robert and Eleanor Babcock  
Nancy and Kevin Bagnall  
Sara Bailey  
Louanne Baily  
Darcy Baker  
Matt Baker  
Meghan Baker  
Lee Ball  
Mark Banker  
Pat and Alan Banks  
Richard Bantel  
Michael Baranski  
Bill Barnes  
Jim Barnett  
Ann Becherer  
Ben Begley  
Eric Bell and Cricket Greer  
John Bell  
Robert and Celia Belton  
Anthony Bennett  
Nancy Benson  
Rosemary Berg  
Robin Berkman  
Roger Bernard and Kristin Bolles  
Elizabeth Bernatowicz  
Bernard and Marian Bernstein  
Anne Bevilacqua  
Jerryanne Bier  
Danny Bigay and Kay Littlejohn  
Luc Binette  
Denise Binion  
Buzz Bizzell  
Jules Blackburn  
Elaina Blake  
Elizabeth Blakely  
William Bland

Andrea Block  
Blue Ridge Group of the Sierra Club  
Kathi Boatright  
David Boggess  
Lane Boldman  
Bobbie Boldt  
Thomas Bonny  
Kimberly Borchard  
Margaret Borgens  
William Bost  
Ann Bourne  
Rebekah Bowling  
Lucas Bowman  
Bob and Jane Brame  
Heidi Breedlove  
Helen Brennan  
Betsy Brey  
Brightwood, POA  
Debra Vian Brown  
Jason Brown  
Larry and Marcia Brown  
Meredith Brown  
Rose Brown  
Teri Brown  
Earl Broyhill  
Frank Broyles  
Jessy Broyles  
Jen Buchan  
Virginia Burggraf  
Dolores and Donna Burke  
John Burke  
Frederic Burnham  
Doren Burrell



Heather Burris  
Lynne and Ken Butterworth

Tom Byers  
Kenneth Byrd  
Cindy Byron  
Tom Byron and Family  
Kelsey Byus  
Tom and Mary Cable  
Anthony Caligiuri  
Ronald Callahan  
Edmund and Delores Cameron  
Linda Campbell  
Adam Canter  
Joel Carpenter  
Susan Carter  
Lawrence Cassada  
Stacy Castello  
Robin Cazier  
Adam Chandler  
William Chell  
Bob Cherry and Jamie Leigh



Brent and Janice Chippendale  
Kendall Church  
Shay Clanton  
Don Clapp  
John Clare  
Michael Clark  
Mike Clark  
Patricia Clark  
Donald Clement III  
Steve Cobb  
Susan Cochran  
Cole City Hunt Club, LLC  
Carla Coleman  
Kirsten Collings  
Molly Collins  
Carol Colloton  
Elizabeth and Paul Congo  
Barbara Conover  
Jeff and Alisha Consroe  
Tabor Conwell

Butch and Lynn Cooke  
Maren Cooke  
Manuela Cooley  
Maryita Cooper  
Pace Cooper  
Joseph and Hazel Cope  
Jim Corey  
Anne Corley  
Tom and Heather Cormons  
Charles Corn  
Dawn Cothran  
Cynthia Coughlin  
Ashley Council  
Bill and Donna Cowden  
Jim Coyle  
Gloria Crabtree  
Jeff Crate  
Dave Creagh  
David Cristeal  
Jessica Critzer

Mark R. Crombie  
April and Jeff Crowe  
Cyerra Crumring  
Brian and Kathy Crutchfield  
Tierra Curry  
Mary Rose Curtis  
Renee Czubowicz  
Sue and Neil Dadd  
Alexander Dadok and Amilda Horne

Susan Daily  
Ashley Daley  
Alexandra Danner  
Oscar Danner  
Lawrence Darby  
Donna Darnall  
Brenda Darrah  
Alexandra Dart  
Beth Davies  
Brigette Davis  
Julie de Carvalho  
Anthony Deason and Angela Tsakanikas  
Lauren Deavers  
Emily Debuys  
Mike and Vicki Deem  
Mark Dehner  
William DeJongh  
Richard DeMott  
William Denton  
Roland des Groseilliens  
Margot Diaz  
Kay Dixon  
Katharine Dodge  
Mary Lou Dolan  
Michael Dolan  
A. and M. Dollerschell  
Caroline Dombalis  
Don Donart  
Donna Douglas  
Barbara Dow  
Jason Dumas  
Andrea Duncan  
Sarah Dwyer  
Clint Dye  
Dynasty Designs  
Bette Dzamba and David Sellers  
Christina and Charles Edmondson  
Nancy Edwards and Robert Randall  
Diane Eggers  
Philip Eggers  
Helen Eggleston

Michael Eggleston  
Monika Eghbalian  
Anna Ehredt  
Cindy Ellis  
Glenda Elswick  
Barbara Elwood  
Kathryn Ely  
Laura England  
Martha Enzmann  
Frank Estis  
Jennifer Eubanks  
Albert and Lynne Euse

Gene Evans  
Lanny Evans  
Elizabeth Fabis  
Deva Faith and Jennifer Spence  
Scott Farfone  
Robert C. Farley  
Edward and Betty Farnworth  
Elleni Fellows  
Stephen Ferguson  
Jose Fernandez  
Jeremy Ferrell  
David Fields  
Paula Finck  
Laryn Finder  
Steve Fisher  
Russell Fleming  
Susan Ford  
Becky Forrest  
Joan Forrest  
Ann Forsythe  
Marvin and Shirley Foster  
Mark and Sharon Fowler  
Alexandra Frady  
Lauren Franklin  
Jennifer Franz  
Olivia Frazier  
Shane Freeman  
Hugo Freund  
Louisa Fritz, M.D. and William Chell  
Frontline Conservation  
Real Estate  
Allison Frothingham  
Robert Funk  
Yvonne Funk  
Kathleen Furbee  
Patricia G. Todd  
Robert Gabig  
Sara Gallivan  
Desere Gamaldi  
Ilyssa Ganek and Danielle Ganek



John Gardner, III  
Phil and Sandra Garland  
Vaughn Garland  
Lydia Garvey  
Chris W. Garvin  
Paul Gaskins  
Don Gasper  
Fran and Joe Gatins  
Patricia Gauspohl  
David Gay  
Len Gecik  
Demetrios Georgaklis  
Mary Lee George  
Jeffrey Gerard  
Ross Geredien  
Tom Gerhardt  
La Ra Gibson  
James Gilbert  
Connie Ginsberg  
Elizabeth Glenn  
Lauren Glickman  
Jonathan Goforth  
Andrea Gomez  
Harley Goodfriend  
Todd Headley  
Cynthia Heenan  
Eberhard Heide  
Miranda Hein  
David Henderson  
James Henderson  
Steven Henderson  
Jerry Hendrix  
Richard P & Lucy B Henighan  
Mark Henson  
Anna Hess  
Kevin Hessler  
Guinevere Higgins  
John and Karen Higgins  
Ben Hill  
Brian Hill and Susan Darley-Hill  
Lindsay Hill  
Rufus Hill

Rebecca Gummere  
Cecil Gurganus  
Johanna Haas and Shae Davidson  
Jason Halbert  
David Hall  
Diane Halvorsen  
Lydia Hamessley  
Kathleen Hancock  
David Hannah and Laurie McDade  
Tessa Hansen  
Jamie Harkins  
Ann Harman  
Dalia Harmon  
Jeannette Harris  
Sonny Harris  
Wess Harris  
Dr. Roger Hartley  
Ken Hassell  
Edward Hatfield  
Savannah Hawkins  
Carol Hay  
Treva Haynes  
Todd Headley  
Cynthia Heenan  
Eberhard Heide  
Miranda Hein  
David Henderson  
James Henderson  
Steven Henderson  
Jerry Hendrix  
Richard P & Lucy B Henighan  
Mark Henson  
Anna Hess  
Kevin Hessler  
Guinevere Higgins  
John and Karen Higgins  
Ben Hill  
Brian Hill and Susan Darley-Hill  
Lindsay Hill  
Rufus Hill

Glenn Hoffmann  
George Holloway  
Heather Holloway  
Cassandra Holmgren  
Derek Holmgren and Sarah Lowry  
Ana Holstein  
Kandy Holt  
Van Holton  
Selina Honaker  
Brian Hoopner  
Barbara Hoots  
Mary Horn  
Horse & Buggy Produce  
Joseph Howard  
Vincent Howard  
Betty Howe  
Melissa Huber  
Kim Huett  
Janie Hughes  
Michael Hughes  
Patricia Hughes  
Robert Hughes  
Robert Hunsicker  
David Hutchison and Shari Galiardi  
Andrew Iden  
Crieghton Irons  
Ross Isaac  
Parvati Ishaya  
Glenda Jackson  
Jackson-Macon Conservation Alliance



Glenn Hoffmann  
George Holloway  
Heather Holloway  
Cassandra Holmgren  
Derek Holmgren and Sarah Lowry  
Ana Holstein  
Kandy Holt  
Van Holton  
Selina Honaker  
Brian Hoopner  
Barbara Hoots  
Mary Horn  
Horse & Buggy Produce  
Joseph Howard  
Vincent Howard  
Betty Howe  
Melissa Huber  
Kim Huett  
Janie Hughes  
Michael Hughes  
Patricia Hughes  
Robert Hughes  
Robert Hunsicker  
David Hutchison and Shari Galiardi  
Andrew Iden  
Crieghton Irons  
Ross Isaac  
Parvati Ishaya  
Glenda Jackson  
Jackson-Macon Conservation Alliance

Cynthia Janes and Charlotte Goedsche  
Tanya Jessup  
Stefan Jirka  
Friendly Average Joe  
Richard Johns  
Bob Johnson  
Eleanor Johnson  
Elizabeth and David Johnson  
Erin Johnson  
William Johnson  
Donna Johnston  
Heloise Jones  
Rachel Jones  
Thomas Jordon  
Anna Joyner  
Brian Juneau  
Stacy Kalstrom  
Alan and Sharl Karpf  
Lloyd Katz  
Mildred Katz  
Jennie Kavage  
Matthias Kayhoe  
Elaine Keane and Richard Maslow  
Susan Keefe  
George Kegley  
Sue Keikes  
Mary Ellen Kelley  
Crystal Kelly  
John Kelly



# BUSINESS LEAGUE

## Champions of the Mountains

### Over \$1000

Appalachian Tree Care  
Earth Fare  
Mast General Store  
Yellow Dog Entertainment, LLC

## Appalachian Stewards

### \$500 to \$999

Liam Photography  
Slow Money  
Steven Airey, DDS., PA.

## Appalachian Protectors

### \$250 to \$499

Makoto's  
Trophy Water Guide Service

## Mountain Defenders

### \$100 to \$249

Abigail Higgins Gardening Services  
Acoustic Corner  
Ambiance Interiors  
Art Cellar Gallery  
BetterWorld Telecom  
Blackbird Frame & Art, LLC

Blue Ridge Mountain Sports  
Boone Bagelry  
Canyons of the Blue Ridge  
Carrington Tutwiler  
CiCi's Pizza  
Dos Amigos  
Early Girl Eatery  
Footsloggers  
Hanging Dog Valley Nursery  
High Country Energy Solutions  
Holton Management  
Joe's Italian Kitchen  
Mellow Mushroom  
Mountain Construction Enterprises  
Mt Rogers Outfitters  
New Morning Gallery  
Our Daily Bread  
Pepper's Restaurant  
Red Onion Cafe

Rexel of Boone  
Sundance Mountain Lands

## Friends of the Mountains

### Up to \$99

Art Mart  
Bare Essentials  
Blue Smoke Coffee Roasting Co.  
Capone's Pizza  
Care-Full Carpets  
Char Restaurant  
Cheap Joe's Art Supplies  
Consignment Cottage  
Dancing Moon Earthway Bookstore  
Doe Ridge Pottery  
Foscoe Fishing Company  
Gaines Kiker Silversmith

Gladiola Girls  
High Country Energy Solutions  
Hob Knob Farm Cafe  
Instant Karma  
Jack Frazier  
Jimmy John's Gourmet Sandwiches  
Melanie's Food Fantasy  
Old Town Treasures  
Paul Taylor Sandals  
Reid's Catering Co., Inc.  
River and Earth Adventures  
Stick Boy Bread Company  
The Bead Box  
The Jefferson Florist  
The Looking Glass  
The Mustard Seed Market  
Timothy L. Warner, Inc.  
Town and Country Landscaping



# SUPPORTERS

## Friends of the Mountains continued...

Twila Kelly	Steve Lovins	Ellen Menzies
Denton Kendrick	John Staples Loyd and Peggy Baldwin	Lumini Merced
Bobby Kilby	Holly Lubowicki	Micki Mercurio Haverland
Marc Killingstad	Brian Lynch	Janet Metro
Mabelle Kirk	Kevin Lynch	Robert and Nancy Meyer
Dale Kirkley	Mary Lyons	Hank and Terri Milius
Michael Kirkpatrick	Patrick Macauley	Madeleine Miller
Robert Kisken	Lois Ann MacBeth	Virginia Miller
Larry Klatt	Mac Macmillon	Wayne Miller
Thomas Kneavel	Gary MacPeck and Ellen Kaczmarek	Paul and Ann Milner
Kristin Knudsen	Marc Maiorana	Jim Minick
Marshall Koch	Dan Malcic	Sidney and Nancy Mitchell
Rich Kolehmainen	Gary and Deanna Mallery	Ray Moltz
Rose Koontz	Pat and Raymond Mannix	Patrick Morales
Mark Kresowik	Paul Manville	Chuck Moran
Amy Krings-Barnes	Dan and Lynn Manweiler	Dan Moran and Katie Bright
Joshua Kucharski	Margaret Marangione	Janis Moravec
Alex Kuhl	John and Cynthia Markham	Roger and Nancy Morehouse
Maria Kyriacopoulos	Markham	Aaron and Anna Morris
Cameron Lafollette	Gail Marney	Laura Morrison
August Lageman	Eric C Marsh	David and Karen Mouw
Julie Laio	Amanda Marshall	James Moylan
Dave Landis	Caroline Martin	Heike Mueller
Debby Landsberg	Charlie and Ruth Martin	James Mullins
Penny Lane	John Martin	Lisa Mullins
Michael Lannon	Kerstin Martin	Elizabeth Munns
Kate Larken	Rebecca Martin	Frank and Jane Murden
Mary Larsen	Robert and Kathy Martin	Dennis Murphy
Andra Larson	Bernard Martinek	J. Kelly Murphy III
Judy and Russell Lathrope	Joanne Martonik	Susan Murphy and Liz LaMurraglia
Alyssa Lawless	Erin Mathe	Elizabeth Murray
H. B. Lee	Jessica McCann	R.H. Myers
Adrienne Leeper	Margaret McCasland	Tim Nam
Katherine Leiby	Ryan McCleery	Warren Napier
Mary Lemay	Marita McClymonds	Andrew Nardone
Donald Lemmerman	Robert and Tina McCorkindale	Caitlen Nelis and Katie MacFarlane
Jean Lenhart	Chandler McCoy-Simandle	Rick Nelson
Eric Lensch	Jeff and Starli McDowell	Volker Neumann
Jane Lentz	Jerry McDowell	Lawrence and Abigail Newman
Dr. Susan Lewis	Katherine McEachern	B. Newmark
Landra Lewis	Christine Linnemeier	Jonathan Newton
Kendra Liddicoat	Julie Lisenby	Daniel Noble
Carol Lienes	Clarissa Logan	Nick Nomic
Magdalene Liles	Wes Logan	Karen Norris
Christine Linnemeier	Stephanie Logsdon	Rocky Norris
Julie Lisenby	Courtney Lomax-Moser	Maureen O'Connor
Clarissa Logan	Al Lookofsky	Julie O'Leary and Frank Whiteman
Wes Logan	Mary Love	James Ogburn
Stephanie Logsdon	Thomas Lovelace	Rob Oles
Courtney Lomax-Moser	Lance Lovins	
Casey McQueen		
Ann McStay		
Lauri McVicker		
Bridget Meagher		
Eric Meiers		

Monica and Gary Olinger	Matthew Pritchard
Chatham Olive	James Privette, Jr.
Courtney Olive	Joanne Pulatti
J Olive	Michelle Quesenberry
Douglas Olson	Carter Quillen
Carol Ortstein	Martin Quirley
Stuart Osten	Gloria Raheja
Loshan Ostroff	Carol Rall
Janet Ouzts	Catherine Ramos
Wayne Owens and Linda Boyer-Owens	Leon and Bobbie Ramsey
Alison Page	Jason Reagan
Rainey Parker	Lauren Ream
Adam Parks	Julie Redd
Steve Paskal	Bronwyn Reece
Todd and Wendy Patoprsty	Kathy and Wade Reece
Rhea Patrick	Caroline Reed
Judy Patton	Herbert Reid
Robert Peebles	Rebecca Rentz-James
J.P. Penzell	Thomas and Billie Rhyne
Lisa and Marvin Percival	David Rickets
Leslie and James Pertzborn	Axel Ringe
Ellen Pesko	Robert Ritter
Jacque and Wayne Petrovich	Gurney Roberson
Claire Pfalzer	Jamey Roberts
Richard Phelps, III	James and Cecelia Robertson
Amoret Phillips	Peter and Jane Roda
Tommy Phillips	Helen Rodgers
Helen and Joseph Pickering	Nicki Rodgers
Bonnie Pierce	Jose Rodriguez-Velez
John Pine	Jen Rogers
Jaime Platts	Speed and Beth Rogers
Joel and Randi Pokladnik	Richard Rosche
Ron Polk	Michael and Trudy Rose
Elizabeth Polter	John Rosine and Claire Cassidy
Kirk Port	Scott Rosner
Judith B Porter, Ph.D.	Melanie Rowlett
Linda Porter	Carol and Lyle Rozeboom
Steven Porter	Jennifer Rubatt
Landon and Caroline Poteat	Lionel Ruberg
Susan Pramberg	John Rudmin
Suzanne Pratt	Daniel Ruggiero
Susan and Michael Presson	George Rupp
Bobby Price	Danny Ruppert
Gabe Price	Stu and Nancy Ryman
Homer Price	Sage
Robert, Erica, and Mercedes Price	Lydia Salas
Thomas Price	Lori Sallade
Lauren Prisuo	Patrick Sallee
	Lindsay Samuels
	Enrique Sanchez
	Caroline Sanders
	Sally Sanders

Kriss and Joan Sands
John and Deborah Santini
Irene Sarnelle
John Scalf
Gerry and Joe Scardo
Denise Schlener
Judith Schlichting
Lauren Schloemer
David Schmauss
Jeff Schmehl
Hunter Schofield
Mark Schonbeck
Julie Schroeder
Peter and Celia Scott
Judy and William Scurry
Scott Seagle
Michael Seaton
Tim and Lee Ann Seeley
George Setzer
Mary Sexton
Daniel Shaw
Robin and Kevin Shea
Paula Shellenberger
Grady Shelton
Mary Shelton
Cynthia Shepherd
John Shepherd
Mark Shipley
Irene Sidel
The Simon Family
Caryl Simon-Katler
Bart Simpson
Gary Simpson
Sandra Simpson
Sandy Sisson
Gary Skupa
Debbie Slack
John and Diane Slater
Fred Slaughter
Jonathan Slaughter
Crystal Sloan
Rob Sloan and Carol Anne Duncan
Adam Smith
Arthur Smith
Dianna Smith
Helen Smith
James and Linda Smith
Hazel Smithey
Calder Smoot
Juanita Edwards
Sneeuwjagt
Steve Snodgrass
Sarah Soltow
Jamie Sommer

# HONORS & MEMORIALS

<b>HONORS:</b>	Charmaine Martin – <i>John Martin</i>
450 Lost Mountains – <i>Jonathan Gensler</i>	Jamie McGuinn – <i>Karen Norris</i>
My Grandparents – <i>Britta Dedrick</i>	Albert Morris – <i>Jean Lenhart</i>
Elizabeth, Phillip, & Cole Ardoin – <i>Michael Dolan</i>	Aaron Newton – <i>Jonathan Newton</i>
Barb – <i>Anthony Alberts</i>	JW & Elizabeth Randolph – <i>Shay Boyd, Yvonne Funk, Kim Huett, Marshall Koch, Caitlen Nelis &amp; Katie, Daniel Noble, Aaron Prillaman, Sarah Tuke</i>
Benji Burrell – <i>Adam Canter</i>	Janisse Ray – <i>Jerryanne Bier</i>
Frank Cook – <i>William Whipple</i>	Jean Ritchie – <i>Kate Larken</i>
Michal Duffy – <i>Elizabeth Glenn</i>	Kathy Selvage – <i>LaRa Gibson</i>
EarthNow, Dickinson College – <i>Kerstin Martin</i>	Mildred Simandle – <i>Chandler McCoy-Simandle</i>
Wendy Scurry Frady – <i>Judy Scurry</i>	Linda Tiller – <i>Twila Kelly</i>
Larry Gibson – <i>Deborah Wagner</i>	Frederick & Ruth Wakefield – <i>Susan Cochran</i>
Doug Hensel – <i>Jennifer Rubatt</i>	Hanna Wheeler – <i>Kathlee Furbee</i>
Angela Hensley – <i>John Ed Scalf</i>	Grace Eliot Williams – <i>David Williams</i>
Lindsay Hill – <i>Crystal Simmons</i>	
Fred Irons – <i>Creighton Irons</i>	
Josh and Ginny – <i>Allison Frothingham</i>	
Lenny Kohm – <i>Mary Shelton</i>	
Ashley Peele & Shawn Kurtzman – <i>Elizabeth Polter</i>	
Dr. Marie – <i>Elaina Blake</i>	
Donna Marsh – <i>Amy Walters</i>	

Kathy Sourifman	Randolph and Barbara Swart	Alex Tice
James Southerland	Cheryl Sweeney	Robert Tock
Southern Appalachian Forest Coalition	Sue Sweeting	Jason Totoin
Southern Environmental Law Center	Carol and David Swing	Jon Towers
Lucy Spencer	Robin Talbert	Tri State Foods Not Lawns
Carmen Stag	Candace Tanner	Erol Triplett
Paul and Caroline Taraldsen	Elizabeth and John Taraldsen	Sarah Tuke
James Tate	James Tate	Lawrence Turk
Cheryl and Steve Taylor	Cheryl and Steve Taylor	Alex Underhill
Elizabeth Taylor	Elizabeth Taylor	University of New Hampshire SEAC
James Taylor	James Taylor	Colleen Unroe
John Taylor	John Taylor	Unitarian Universalist Fellowship of Greater Cumberland
Larry and Esther Taylor	Larry and Esther Taylor	William van der Linde
Natasha Taylor	Natasha Taylor	Daniel van Dijk
Penny Anne and Mike Taylor	Penny Anne and Mike Taylor	Lee Vason
Terry Thirion	Terry Thirion	Frank Vend
Eric and Terrany Thomas	Eric and Terrany Thomas	Guy Vig
Gail Thomas	Gail Thomas	Sarah Vig
Lee Thomas	Lee Thomas	Virginia Tech University Libraries
Marvin Thompson	Marvin Thompson	Carolyn Volger
Milton Thompson	Milton Thompson	James Von Bramer
Teddy and Annette Thompson	Teddy and Annette Thompson	Madeline Wadley
Charles Thornton	Charles Thornton	

Memorials were donated by the following individuals in honor of Sarah Percival, a former intern, volunteer and friend of Appalachian Voices.

Nancy & Kevin Bagnall, Jim Barnett, Jules Blackburn, Diane Brooks, Dolores & Donna Burke, Lynne & Ken Butterworth, Sue & Neil Dadd, Ashley Daley, Erica DiPietro, Melissa Duffy, Monika Eghbalian, Penny & Scott Fletcher, Mr. & Mrs. Robert Fyfe, Ilyssa & Danielle Ganek & Family, Caitlin Geary, Bill and Kathy Geary, Demetrios Georgaklis, Harley & David Goodfriend, Jodie Imbriglio, Debby Landsberg, Carol Lienes, Kevin Low, The Newman Family, Andrew Nardone, Carol Orstein, Alison Page, Steve Paskal, Susan Pramberg, Lauren Ream, Minda Reidy, Robin & Kevin Shea, Laurie Skokan, Kathy Sourifman, Mr. & Mrs. Richard Stirrat, Larry, Esther, Jared, & Adam Taylor, Michael Wilcox, Hayley Wood

<b>MEMORIALS:</b>	Emily & Chester Ray – <i>Sandy Sisson</i>
Sue Daniels – <i>Mark Shonbeck</i>	Bob Thompson – <i>Barbara &amp; Sonny Aycock</i>
Bobby Logan – <i>Wes Logan</i>	Nancy Tyree – <i>Kent Walton</i>
Mary Hale Lomax – <i>Robb Doser</i>	Dr. John Watkins – <i>Tim Nam</i>
Kathlenn McCaskill – <i>Caroline Reed</i>	David Witherspoon – <i>Keith Watson</i>
Julia Pryde – <i>Anthy Alexiades</i>	Earl W Yates – <i>Renee Yates</i>



APRIL 6, 1985 - APRIL 23, 2010

Deborah Wagner	David Wheeler and Judith Hallock	Charlotte and John Wilson
Nora Walbourn	Raymond Wheeler	David Wilson
Chris Walker	Donovan Wheless	Kent Wilson
Roger Walker	Eli and Linda White	Matthew Wilson
Karen Wallace	Gordon White	Nathan Wilson
Maureen Wallin	Viola White	Vaughn and Doris Wilson
Amy Walters	Bill and Stephanie Whitesides	Doug and Carol Wingeier
Kent Walton	Elizzabeth Whitmire	Katherine Wingfield
Brandon Ward	Virginia Whitmire	Griffin Winton
Gregory Ward	Sharon Whitmore	Paul Wohlford
W.W. and Maeve Ward	Michael Wilcox	Kayti Wontrell
James Ware	Robert and Nancy Wiley	Hayley Wood
Richard Wargo	Robert Wilkins	Peter Wood
Oden Warman	Andy Willard	Susan Woodard
Ruth Warner	Alice Williams	Joan Woodworth
Matthew Wasson	David Williams	Roger Woolford
Lisa Watersnake	Graham Williams	Alexis Wreden
Barbara Watson	Lex Williams	Markia Wright
Keith Watson and Ruth Barber	Lori Williams	Renee Yates
Connie Weaver	Marianne Williams	Georgeanne Young
John and Mary Webster	Patrick Williams	Judy Young
Chris Weinert	Tom Williams	Walter Young
Vernon and Sarah Wells	Rob and Holly Willis	Alycia Yowell-Many
Susan Weltz	Zoe Willow	Tim Zecha
Rudy Werlink		Cathy Zheutiin



A scenic view of the Appalachian Mountains, showing layers of forested peaks receding into the distance under a hazy sky. In the foreground, the green leaves and yellowish-white flower clusters of a tree are visible on the left and bottom edges.

# Appalachian Voices

191 Howard Street • Boone, N.C. 28607  
828.262.1500

[appalachianvoices.org](http://appalachianvoices.org)