

# Pepco: Coal Suppliers, Jan-Oct, 2008

Mine_ID	Mine_Name	Operator_Name	Controller_Name	Mine_Type	Facility_Type	State	County	Quantity
<b>Central Appalachian - Confirmed MTR</b>								
4406786	Pardee Surface	Cumberland River Coal Company	Arch Coal Inc	S	Surface	VA	Wise	6459
1517360	Pe Southern Pike Co	Premier Elkhorn Coal Company	TECO Energy Inc	S	Surface	KY	Pike	74512
4605317	Goals Preparation Plant	Goals Coal Company	Massey Energy Company	SU	Facility	WV	Raleigh	151821
4608465	Toms Fork Loadout	Catenary Coal Company LLC	Patriot Coal Corporation	SU	Facility	WV	Kanawha	39881
1512896	Jamboree Loadout	CAM Mining LLC	Wexford Capital LLC	SU	Facility	KY	Pike	9034
<b>Central Appalachian - Probable MTR</b>								
4609114	Pax Load Out	Pioneer Fuel Corporation	Foundation Coal Corporation	SU	Facility	WV	Fayette	345250
4608940	Bull Creek Prep & Refuse Disp Facility	Raven Crest Contracting, LLC	John M Potter; Thomas A Potter	SU	Facility	WV	Boone	77426
1516577	Mill Creek Prep Plant	Deane Mining LLC	Wexford Capital LLC	SU	Facility	KY	Letcher	68770
<b>Central Appalachian - Underground</b>								
4609029	Mountaineer II Mine	Mingo Logan Coal Company	Arch Coal Inc	U	Underground	WV	Logan	111044
4608429	Candice 2	Long Branch Energy	Long Branch Energy Corporation	U	Underground	WV	Boone	58720
1510753	Mine #1	Clean Energy Mining Company	Massey Energy Company	U	Underground	KY	Pike	286460
<b>Northern Appalachian - Surface / Underground</b>								
3600806	Champion Refuse Disposal Area	Champion Processing Inc	Anthony Bologna Theodore Yowonske; Michaelangelo P Ripepi	SU	Facility	PA	Washington	21404
3608647	Bullskin Tipple	Bullskin Tipple Company	Ripepi	SU	Facility	PA	Fayette	7824
4608751	Whitetail Kittanning Mine	Kingwood Mining Company LLC	Alpha Natural Resources LLC	U	Underground	WV	Preston	680675
3607230	Bailey Mine	Consol Pennsylvania Coal Company	CONSOL Energy Inc	U	Underground	PA	Greene	1028448
3605466	Emerald Mine No 1	Emerald Coal Resources LP	Foundation Coal Corporation	U	Underground	PA	Greene	429751
4604168	Sentinel Mine	Wolf Run Mining Company	International Coal Group Inc (ICG)	U	Underground	WV	Barbour	453180
4601456	Federal No 2	Eastern Associated Coal LLC	Patriot Coal Corporation	U	Underground	WV	Monongalia	75443
4605544	Sawmill Run Preparation Plant	Wolf Run Mining Company	International Coal Group Inc (ICG)	SU	Facility	WV	Upshur	314276
4606045	Brooks Run Processing Plant No 1	Brooks Run Mining Company LLC	Alpha Natural Resources LLC	SU	Facility	WV	Webster	156597

Sources: EIA Form 923 - <http://www.eia.doe.gov/cneaf/electricity/page/eia423.html>  
MSHA Coal Mine Address/Employment Files: <http://www.msha.gov/STATS/PART50/P50Y2K/AETABLE.HTM>

*Accessed: 8 February, 2009*

## Pepco: Mines and Prep Plants Supplying Mountaintop Removal Coal, Jan-Oct, 2008

Mine/Plant: Tom's Fork Loadout  
Samples Mine  
Controller: Magnum Coal Co.  
Operator: Catenary Coal Co.  
MSHA ID: 4607178  
State: West Virginia  
County: Kanawha



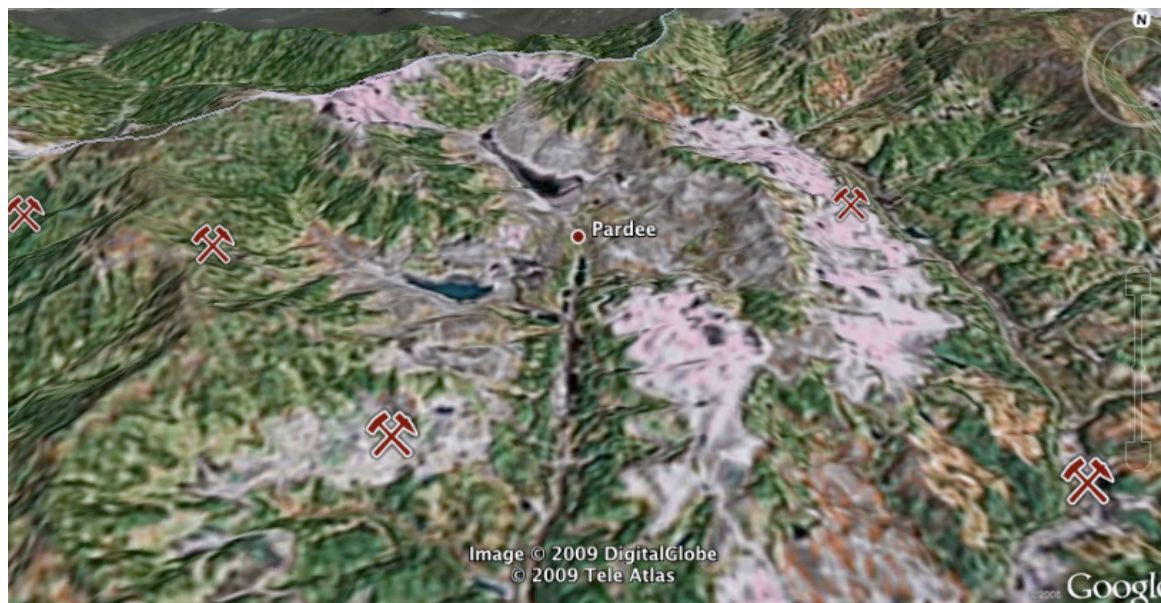
Mine: PE Southern Pike County  
Controller: TECO Energy Inc.  
Operator: Premier Elkhorn Coal Co.  
MSHA ID: 1517360  
State: Kentucky  
County: Pike





## Pepco: Mines and Prep Plants Supplying Mountaintop Removal Coal, Jan-Oct, 2008

Mine: Pardee Surface  
Controller: Arch Coal Co.  
Operator: Cumberland River Coal Co.  
MSHA ID: 440678  
State: Virginia  
County: Wise



Mine/Plant: Goals Prep Plant  
Edwight Surface Mine  
Controller: Massey Energy Co.  
Operator: Goals Coal Co.  
MSHA ID: 4605317  
State: West Virginia  
County: Kanawha

